



**ELECTRONIC COPY**

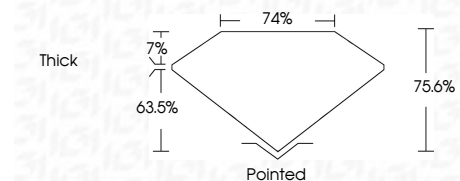
651456644  
Report verification at [igi.org](http://igi.org)



October 23, 2024  
IGI Report Number **651456644**  
Description **NATURAL DIAMOND**  
Shape and Cutting Style **PRINCESS CUT**  
Measurements **7.97 X 7.62 X 5.76 MM**

**GRADING RESULTS**

Carat Weight **3.03 CARATS**  
Color Grade **J**  
Clarity Grade **VVS 2**  
Cut Grade **VERY GOOD**



**ADDITIONAL GRADING INFORMATION**

Polish **EXCELLENT**  
Symmetry **EXCELLENT**  
Fluorescence **NONE**  
Inscription(s) **IGI 651456644**



**IGI**

October 23, 2024  
IGI Report No 651456644  
**PRINCESS CUT**  
3.03 CARATS  
J  
3.03 CARATS  
VVS 2  
VERY GOOD  
76.6%  
74%  
Thick  
Pointed  
EXCELLENT  
EXCELLENT  
NONE  
IGI 651456644

**DIAMOND REPORT**

October 23, 2024  
IGI Report Number **651456644**  
Description **NATURAL DIAMOND**  
Shape and Cutting Style **PRINCESS CUT**  
Measurements **7.97 X 7.62 X 5.76 MM**

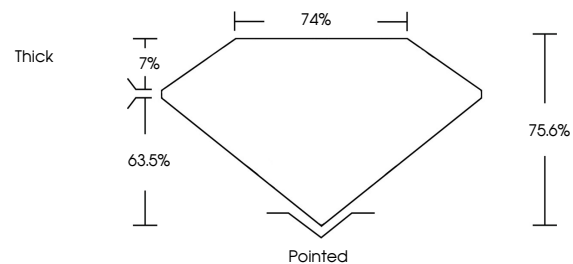
**GRADING RESULTS**

Carat Weight **3.03 CARATS**  
Color Grade **J**  
Clarity Grade **VVS 2**  
Cut Grade **VERY GOOD**

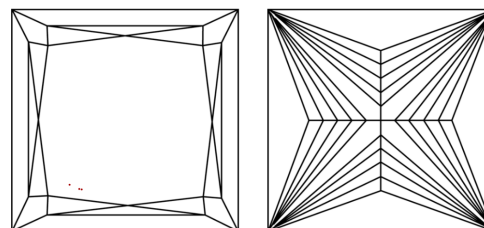
**ADDITIONAL GRADING INFORMATION**

Polish **EXCELLENT**  
Symmetry **EXCELLENT**  
Fluorescence **NONE**  
Inscription(s) **IGI 651456644**

**PROPORTIONS**

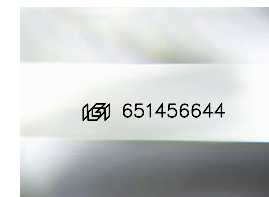


**CLARITY CHARACTERISTICS**



**KEY TO SYMBOLS**

Red symbols indicate internal characteristics.  
Green symbols indicate external characteristics.



Sample Image Used

**COLOR**

D - F	G - J	K - M	N - R	S - Z	FANCY
Colorless	Near Colorless	Slightly Tinted	Very Light Color	Light Color	

**CLARITY**

IF	VVS <sup>1-2</sup>	VS <sup>1-2</sup>	SI <sup>1-2</sup>	I <sup>1-3</sup>
Internally Flawless	Very Very Slightly Included	Very Slightly Included	Slightly Included	Included

