



ELECTRONIC COPY

DIAMOND REPORT

November 11, 2024	
IGI Report Number	651456684
Description	NATURAL DIAMOND
Shape and Cutting Style	CUT CORNERED RECTANGULAR MODIFIED BRILLIANT
Measurements	9.32 X 7.48 X 5.02 MM

GRADING RESULTS

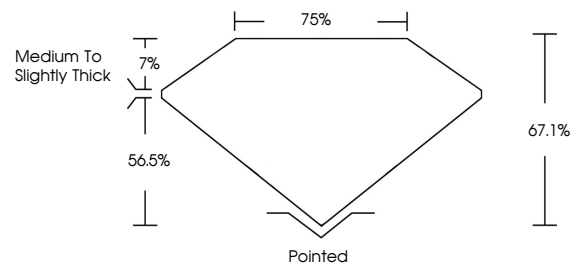
Carat Weight	3.02 CARATS
Color Grade	K
Clarity Grade	VS 1
Cut Grade	VERY GOOD

ADDITIONAL GRADING INFORMATION

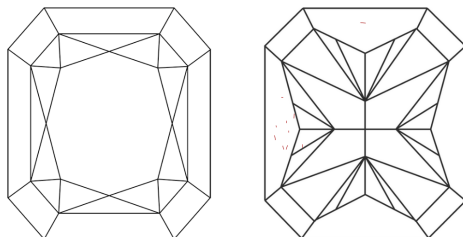
Polish	EXCELLENT
Symmetry	EXCELLENT
Fluorescence	NONE
Inscription(s)	151 651456684

651456684
Report verification at igi.org

PROPORTIONS

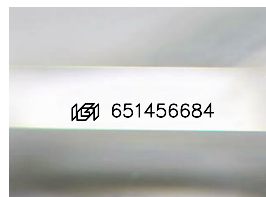


CLARITY CHARACTERISTICS



KEY TO SYMBOLS

Red symbols indicate internal characteristics.
Green symbols indicate external characteristics.



Sample Image Used

COLOR

D - F	G - J	K - M	N - R	S - Z	FANCY
Colorless	Near Colorless	Slightly Tinted	Very Light Color	Light Color	

CLARITY

IF	WS ¹⁻²	VS ¹⁻²	SI ¹⁻²	I ¹⁻³
Internally Flawless	Very Very Slightly Included	Very Slightly Included	Slightly Included	Included

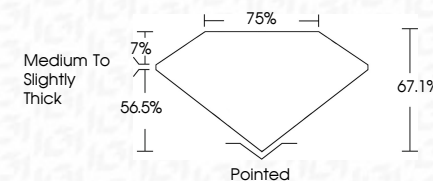
© IGI 2020, International Gemological Institute

FD - 10 20

DIAMOND REPORT



November 11, 2024	
IGI Report Number	651456684
Description	NATURAL DIAMOND
Shape and Cutting Style	CUT CORNERED RECTANGULAR MODIFIED BRILLIANT
Measurements	9.32 X 7.48 X 5.02 MM
GRADING RESULTS	
Carat Weight	3.02 CARATS
Color Grade	K
Clarity Grade	VS 1
Cut Grade	VERY GOOD



ADDITIONAL GRADING INFORMATION

Polish	EXCELLENT
Symmetry	EXCELLENT
Fluorescence	NONE
Inscription(s)	151 651456684



IG



November 11, 2024	3.02 CARATS
GI Report No 65145694	Vs1
CU CORNERED RECT. MODIFIED BRILLIANT	VERY GOOD
	61.1%
	79%
	Medium to Slightly Thick
	Pointed
	EXCELLENT
	EXCELLENT
	NONE
	505 451 856464