



**ELECTRONIC COPY**

665404559  
Report verification at igi.org

**DIAMOND REPORT**

December 16, 2024  
IGI Report Number **665404559**  
Description **NATURAL DIAMOND**  
Shape and Cutting Style **PRINCESS CUT**  
Measurements **8.03 X 7.97 X 5.52 MM**

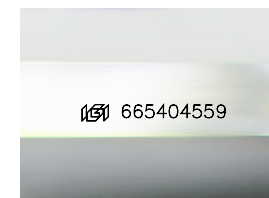
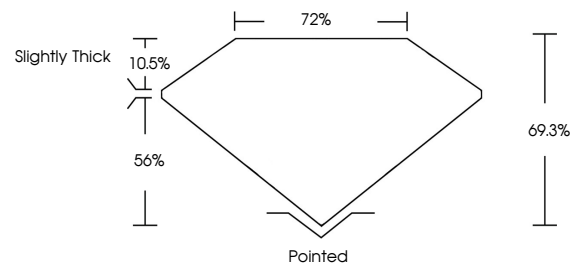
**GRADING RESULTS**

Carat Weight **3.10 CARATS**  
Color Grade **J**  
Clarity Grade **VVS 2**  
Cut Grade **EXCELLENT**

**ADDITIONAL GRADING INFORMATION**

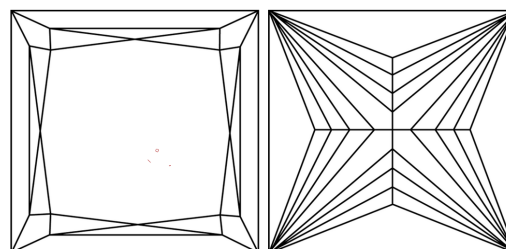
Polish **EXCELLENT**  
Symmetry **EXCELLENT**  
Fluorescence **NONE**  
Inscription(s) **665404559**

**PROPORTIONS**



Sample Image Used

**CLARITY CHARACTERISTICS**



**KEY TO SYMBOLS**

Red symbols indicate internal characteristics.  
Green symbols indicate external characteristics.

**COLOR**

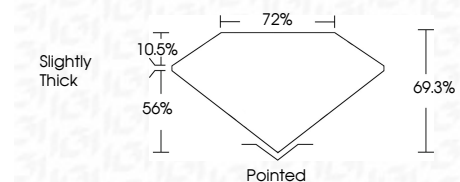
D - F	G - J	K - M	N - R	S - Z	FANCY
Colorless	Near Colorless	Slightly Tinted	Very Light Color	Light Color	

**CLARITY**

IF	VVS <sup>1-2</sup>	VS <sup>1-2</sup>	SI <sup>1-2</sup>	I <sup>1-3</sup>
Internally Flawless	Very Very Slightly Included	Very Slightly Included	Slightly Included	Included



December 16, 2024  
IGI Report Number **665404559**  
Description **NATURAL DIAMOND**  
Shape and Cutting Style **PRINCESS CUT**  
Measurements **8.03 X 7.97 X 5.52 MM**  
**GRADING RESULTS**  
Carat Weight **3.10 CARATS**  
Color Grade **J**  
Clarity Grade **VVS 2**  
Cut Grade **EXCELLENT**



**ADDITIONAL GRADING INFORMATION**

Polish **EXCELLENT**  
Symmetry **EXCELLENT**  
Fluorescence **NONE**  
Inscription(s) **665404559**



**IGI**



December 16, 2024	IGI Report No. 665404559	PRINCESS CUT	3.10 CARATS	J	VVS 2	EXCELLENT	69.3%	72%	Slightly Thick	Pointed	EXCELLENT	EXCELLENT	NONE	665404559					
IGI Report No. 665404559	PRINCESS CUT	8.03 X 7.97 X 5.52 MM	3.10 CARATS	J	VVS 2	EXCELLENT	69.3%	72%	Slightly Thick	Pointed	EXCELLENT	EXCELLENT	NONE	665404559					
Color Grade	J	Clarity Grade	VVS 2	Depth	69.3%	Table	72%	Girdle	Slightly Thick	Culet	Pointed	Polish	EXCELLENT	Symmetry	EXCELLENT	Fluorescence	NONE	Inscription(s)	665404559