



ELECTRONIC COPY

DIAMOND REPORT

February 21, 2025	
IGI Report Number	678538351
Description	NATURAL DIAMOND
Shape and Cutting Style	SQUARE EMERALD CUT
Measurements	7.82 X 7.74 X 5.37 MM

GRADING RESULTS

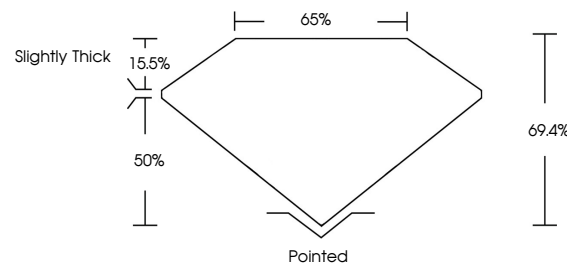
Carat Weight	3.03 CARATS
Color Grade	I
Clarity Grade	VVS 1
Cut Grade	VERY GOOD

ADDITIONAL GRADING INFORMATION

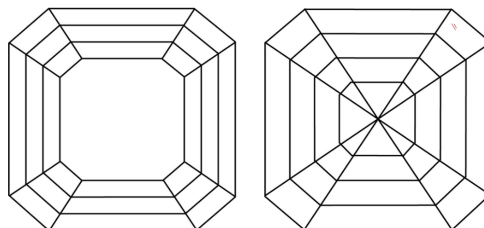
Polish	EXCELLENT
Symmetry	EXCELLENT
Fluorescence	VERY SLIGHT
Inscription(s)	131 678538351

678538351
Report verification at igi.org

PROPORTIONS

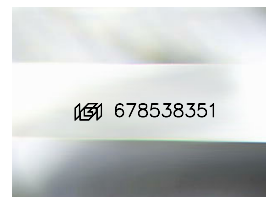


CLARITY CHARACTERISTICS



KEY TO SYMBOLS

Red symbols indicate internal characteristics.
Green symbols indicate external characteristics.



Sample Image Used

COLOR

D - F	G - J	K - M	N - R	S - Z	FANCY
Colorless	Near Colorless	Slightly Tinted	Very Light Color	Light Color	

CLARITY

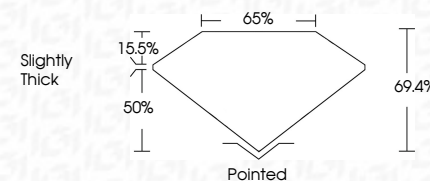
IF	VVS ¹⁻²	VS ¹⁻²	SI ¹⁻²	I ¹⁻³
Internally Flawless	Very Very Slightly Included	Very Slightly Included	Slightly Included	Included



February 21, 2025	
IGI Report Number	678538351
Description	NATURAL DIAMOND
Shape and Cutting Style	SQUARE EMERALD CUT
Measurements	7.82 X 7.74 X 5.37 MM

GRADING RESULTS

Carat Weight	3.03 CARATS
Color Grade	I
Clarity Grade	VVS 1
Cut Grade	VERY GOOD



ADDITIONAL GRADING INFORMATION

Polish	EXCELLENT
Symmetry	EXCELLENT
Fluorescence	VERY SLIGHT
Inscription(s)	(15) 678538351



© IGI 2020, International Gemological Institute

FD - 10 20



THIS DOCUMENT WAS PRODUCED WITH THE FOLLOWING SECURITY MEASURES: SPECIAL DOCUMENT PAPER, INK SCREENS, WATERMARK, BACKGROUND DESIGNS, HOLOGRAM, AND OTHER SECURITY FEATURES NOT LISTED AND DO EXCEED DOCUMENT SECURITY INDUSTRY GUIDELINES

www.igi.org

February 21, 2025
 IGI Report No 67853
 SQUIRE EMERALD C

7.82 X 7.74 X 5.37 MM	
Carat Weight	3.03 CARATS
Color Grade	VVS 1
Clarity Grade	VERY GOOD
Cut Grade	66.4%
Depth	65%
Table	Slightly Thick
Girdle	
Culet	Pointed
Polish	EXCELLENT
Symmetry	EXCELLENT
Fluorescence	VERY SLIGHT
International #	KAG-479588951