



ELECTRONIC COPY

723525409
Report verification at igi.org



August 18, 2025
IGI Report Number **723525409**
Description **NATURAL DIAMOND**
Shape and Cutting Style **PRINCESS CUT**
Measurements **7.01 X 6.72 X 4.85 MM**
GRADING RESULTS
Carat Weight **2.02 CARATS**
Color Grade **J**
Clarity Grade **VS 2**
Cut Grade **VERY GOOD**

DIAMOND REPORT

August 18, 2025
IGI Report Number **723525409**
Description **NATURAL DIAMOND**
Shape and Cutting Style **PRINCESS CUT**
Measurements **7.01 X 6.72 X 4.85 MM**

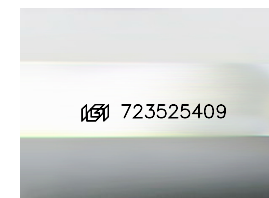
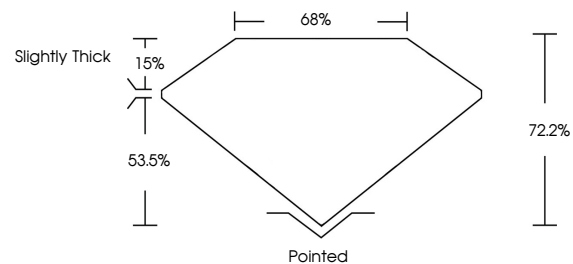
GRADING RESULTS

Carat Weight **2.02 CARATS**
Color Grade **J**
Clarity Grade **VS 2**
Cut Grade **VERY GOOD**

ADDITIONAL GRADING INFORMATION

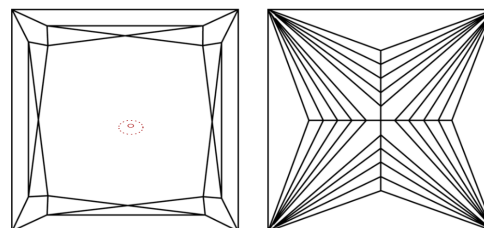
Polish **EXCELLENT**
Symmetry **EXCELLENT**
Fluorescence **NONE**
Inscription(s) **723525409**

PROPORTIONS



Sample Image Used

CLARITY CHARACTERISTICS



KEY TO SYMBOLS

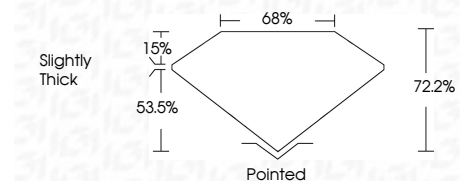
Red symbols indicate internal characteristics.
Green symbols indicate external characteristics.

COLOR

D - F	G - J	K - M	N - R	S - Z	FANCY
Colorless	Near Colorless	Slightly Tinted	Very Light Color	Light Color	

CLARITY

IF	VVS ¹⁻²	VS ¹⁻²	SI ¹⁻²	I ¹⁻³
Internally Flawless	Very Very Slightly Included	Very Slightly Included	Slightly Included	Included



ADDITIONAL GRADING INFORMATION

Polish **EXCELLENT**
Symmetry **EXCELLENT**
Fluorescence **NONE**
Inscription(s) **723525409**



IGI



August 18, 2025
IGI Report No 723525409
PRINCESS CUT
2.02 CARATS
J
2.02 CARATS
Color Grade
J
Clarity Grade
VS 2
Depth
72.2%
Table
68%
Girdle
Slightly Thick
Pointed
EXCELLENT
EXCELLENT
NONE
NONE
723525409