



ELECTRONIC COPY

737544495
Report verification at igi.org



October 10, 2025
IGI Report Number **737544495**
Description **NATURAL DIAMOND**
Shape and Cutting Style **CUT CORNERED
RECTANGULAR MODIFIED
BRILLIANT**
Measurements **6.29 X 4.86 X 3.48 MM**
GRADING RESULTS
Carat Weight **1.01 CARAT**
Color Grade **J**
Clarity Grade **VS 2**
Cut Grade **VERY GOOD**

DIAMOND REPORT

October 10, 2025
IGI Report Number **737544495**
Description **NATURAL DIAMOND**
Shape and Cutting Style **CUT CORNERED RECTANGULAR
MODIFIED BRILLIANT**
Measurements **6.29 X 4.86 X 3.48 MM**

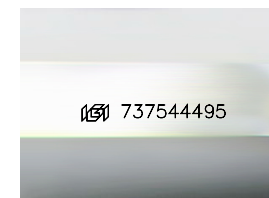
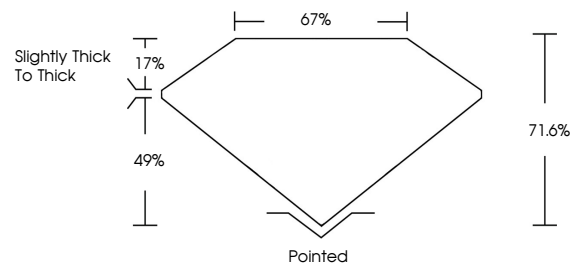
GRADING RESULTS

Carat Weight **1.01 CARAT**
Color Grade **J**
Clarity Grade **VS 2**
Cut Grade **VERY GOOD**

ADDITIONAL GRADING INFORMATION

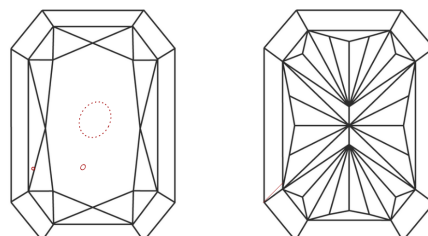
Polish **EXCELLENT**
Symmetry **EXCELLENT**
Fluorescence **NONE**
Inscription(s) **737544495**

PROPORTIONS



Sample Image Used

CLARITY CHARACTERISTICS



KEY TO SYMBOLS

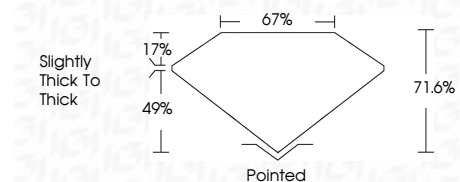
Red symbols indicate internal characteristics.
Green symbols indicate external characteristics.

COLOR

D - F	G - J	K - M	N - R	S - Z	FANCY
Colorless	Near Colorless	Slightly Tinted	Very Light Color	Light Color	

CLARITY

IF	VVS ¹⁻²	VS ¹⁻²	SI ¹⁻²	I ¹⁻³
Internally Flawless	Very Very Slightly Included	Very Slightly Included	Slightly Included	Included



ADDITIONAL GRADING INFORMATION

Polish **EXCELLENT**
Symmetry **EXCELLENT**
Fluorescence **NONE**
Inscription(s) **737544495**



IGI



October 10, 2025
IGI Report No 737544495
CUT CORNERED RECT. MODIFIED BRILLIANT
6.29 X 4.86 X 3.48 MM
Carat Weight 1.01 CARAT
Color Grade J
Clarity Grade VS 2
Cut Grade VERY GOOD
Depth 71.6%
Table 67%
Girdle Slightly thick to thick
Culet Pointed
Polish EXCELLENT
Symmetry EXCELLENT
Fluorescence NONE
Inscription(s) 737544495