



ELECTRONIC COPY

756554481
Report verification at igi.org



December 19, 2025
IGI Report Number **756554481**
Description **NATURAL DIAMOND**
Shape and Cutting Style **ROUND BRILLIANT**
Measurements **7.33 - 7.37 X 4.56 MM**
GRADING RESULTS
Carat Weight **1.50 CARAT**
Color Grade **J**
Clarity Grade **INTERNALLY FLAWLESS**
Cut Grade **EXCELLENT**

DIAMOND REPORT

December 19, 2025
IGI Report Number **756554481**
Description **NATURAL DIAMOND**
Shape and Cutting Style **ROUND BRILLIANT**
Measurements **7.33 - 7.37 X 4.56 MM**

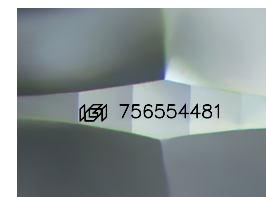
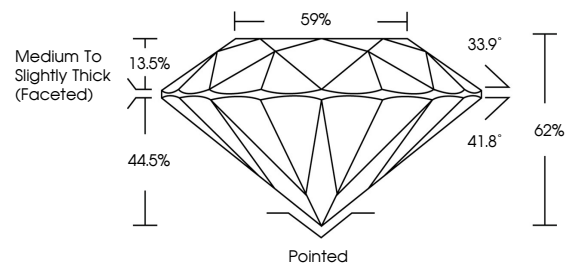
GRADING RESULTS

Carat Weight **1.50 CARAT**
Color Grade **J**
Clarity Grade **INTERNALLY FLAWLESS**
Cut Grade **EXCELLENT**

ADDITIONAL GRADING INFORMATION

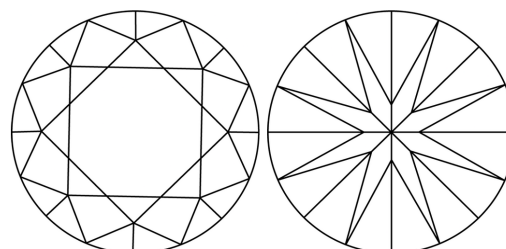
Polish **EXCELLENT**
Symmetry **EXCELLENT**
Fluorescence **VERY SLIGHT**
Inscription(s) **756554481**

PROPORTIONS



Sample Image Used

CLARITY CHARACTERISTICS



KEY TO SYMBOLS

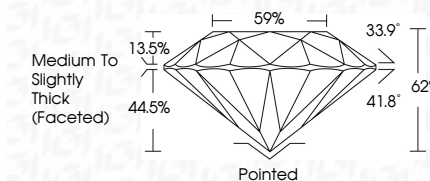
Red symbols indicate internal characteristics.
Green symbols indicate external characteristics.

COLOR

D - F	G - J	K - M	N - R	S - Z	FANCY
Colorless	Near Colorless	Slightly Tinted	Very Light Color	Light Color	

CLARITY

FL	IF	VVS ¹⁻²	VS ¹⁻²	SI ¹⁻²	I ¹⁻³
Flawless	Internally Flawless	Very Very Slightly Included	Very Slightly Included	Slightly Included	Included



ADDITIONAL GRADING INFORMATION

Polish **EXCELLENT**
Symmetry **EXCELLENT**
Fluorescence **VERY SLIGHT**
Inscription(s) **756554481**



IGI



December 19, 2025
IGI Report No 756554481
ROUND BRILLIANT
1.50 CARAT
Color Grade **J**
Clarity Grade **IF**
Depth **62%**
Table **59%**
Girdle **Medium To Slightly Thick (Faceted)**
Culet **Pointed**
Polish **EXCELLENT**
Symmetry **EXCELLENT**
Fluorescence **VERY SLIGHT**
Inscriptions(s) **756554481**