



**ELECTRONIC COPY**

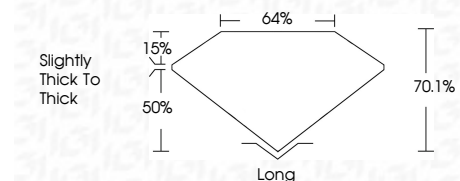
756554785  
Report verification at [igi.org](http://igi.org)



December 22, 2025  
IGI Report Number **756554785**  
Description **NATURAL DIAMOND**  
Shape and Cutting Style **EMERALD CUT**  
Measurements **8.35 X 5.91 X 4.14 MM**

**GRADING RESULTS**

Carat Weight **2.11 CARATS**  
Color Grade **K**  
Clarity Grade **VS 1**  
Cut Grade **VERY GOOD**



**ADDITIONAL GRADING INFORMATION**

Polish **EXCELLENT**  
Symmetry **EXCELLENT**  
Fluorescence **NONE**  
Inscription(s) **(IGI) 756554785**



**IGI**

December 22, 2025  
IGI Report No 756554785  
**EMERALD CUT**  
8.35 X 5.91 X 4.14 MM  
2.11 CARATS  
K  
Color Grade  
VS 1  
VERY GOOD  
70.1%  
64%  
Slightly thick to thick  
Long  
EXCELLENT  
EXCELLENT  
NONE  
(IGI) 756554785

**DIAMOND REPORT**

December 22, 2025  
IGI Report Number **756554785**  
Description **NATURAL DIAMOND**  
Shape and Cutting Style **EMERALD CUT**  
Measurements **8.35 X 5.91 X 4.14 MM**

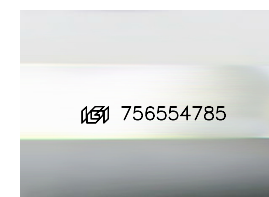
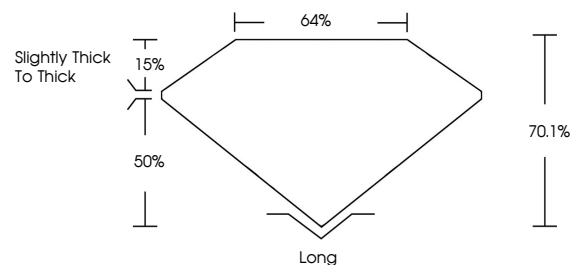
**GRADING RESULTS**

Carat Weight **2.11 CARATS**  
Color Grade **K**  
Clarity Grade **VS 1**  
Cut Grade **VERY GOOD**

**ADDITIONAL GRADING INFORMATION**

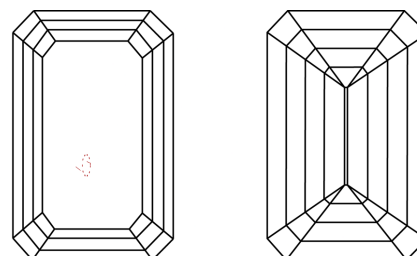
Polish **EXCELLENT**  
Symmetry **EXCELLENT**  
Fluorescence **NONE**  
Inscription(s) **(IGI) 756554785**

**PROPORTIONS**



Sample Image Used

**CLARITY CHARACTERISTICS**



**KEY TO SYMBOLS**

Red symbols indicate internal characteristics.  
Green symbols indicate external characteristics.

**COLOR**

D - F	G - J	K - M	N - R	S - Z	FANCY
Colorless	Near Colorless	Slightly Tinted	Very Light Color	Light Color	

**CLARITY**

FL	IF	VVS 1-2	VS 1-2	SI 1-2	I 1-3
Flawless	Internally Flawless	Very Very Slightly Included	Very Slightly Included	Slightly Included	Included

