



**ELECTRONIC COPY**

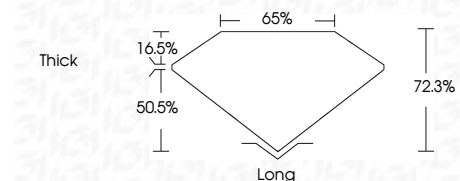
764612035  
Report verification at [igi.org](http://igi.org)



February 3, 2026  
IGI Report Number **764612035**  
Description **NATURAL DIAMOND**  
Shape and Cutting Style **EMERALD CUT**  
Measurements **7.94 X 5.77 X 4.17 MM**

**GRADING RESULTS**

Carat Weight **1.92 CARAT**  
Color Grade **K**  
Clarity Grade **VS 1**  
Cut Grade **VERY GOOD**



**ADDITIONAL GRADING INFORMATION**

Polish **EXCELLENT**  
Symmetry **EXCELLENT**  
Fluorescence **SLIGHT**  
Inscription(s) **IGI 764612035**



**IGI**

February 3, 2026  
IGI Report No 764612035  
**EMERALD CUT**  
7.94 X 5.77 X 4.17 MM  
1.92 CARAT  
K  
VS 1  
VERY GOOD  
72.3%  
65%  
Thick  
Long  
EXCELLENT  
EXCELLENT  
SLIGHT  
IGI 764612035

**DIAMOND REPORT**

February 3, 2026  
IGI Report Number **764612035**  
Description **NATURAL DIAMOND**  
Shape and Cutting Style **EMERALD CUT**  
Measurements **7.94 X 5.77 X 4.17 MM**

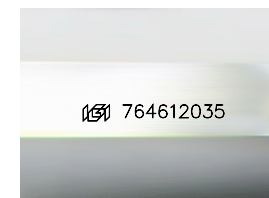
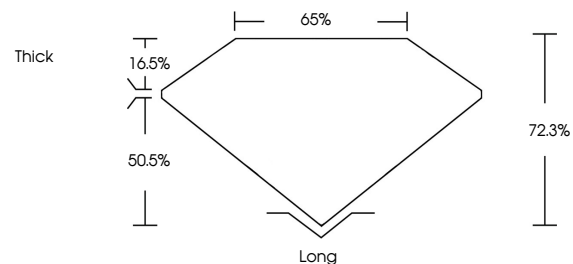
**GRADING RESULTS**

Carat Weight **1.92 CARAT**  
Color Grade **K**  
Clarity Grade **VS 1**  
Cut Grade **VERY GOOD**

**ADDITIONAL GRADING INFORMATION**

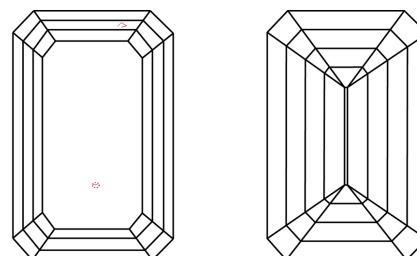
Polish **EXCELLENT**  
Symmetry **EXCELLENT**  
Fluorescence **SLIGHT**  
Inscription(s) **IGI 764612035**

**PROPORTIONS**



Sample Image Used

**CLARITY CHARACTERISTICS**



**KEY TO SYMBOLS**

Red symbols indicate internal characteristics.  
Green symbols indicate external characteristics.

**COLOR**

D - F	G - J	K - M	N - R	S - Z	FANCY
Colorless	Near Colorless	Slightly Tinted	Very Light Color	Light Color	

**CLARITY**

FL	IF	VVS 1-2	VS 1-2	SI 1-2	I 1-3
Flawless	Internally Flawless	Very Very Slightly Included	Very Slightly Included	Slightly Included	Included

