



**ELECTRONIC COPY**

770657103  
Report verification at [igi.org](http://igi.org)

**DIAMOND REPORT**

March 4, 2026  
IGI Report Number **770657103**  
Description **NATURAL DIAMOND**  
Shape and Cutting Style **PRINCESS CUT**  
Measurements **6.49 X 6.48 X 4.97 MM**

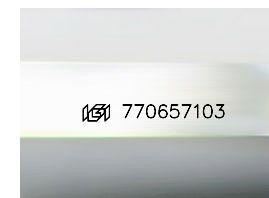
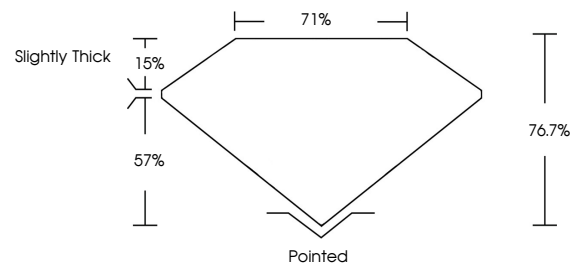
**GRADING RESULTS**

Carat Weight **2.00 CARATS**  
Color Grade **K**  
Clarity Grade **VS 1**  
Cut Grade **VERY GOOD**

**ADDITIONAL GRADING INFORMATION**

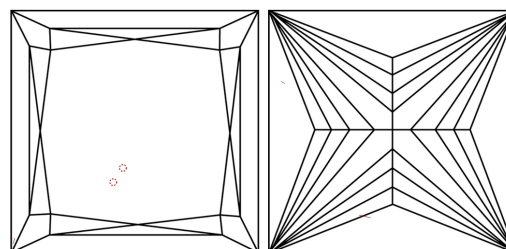
Polish **EXCELLENT**  
Symmetry **EXCELLENT**  
Fluorescence **VERY SLIGHT**  
Inscription(s) **770657103**

**PROPORTIONS**



Sample Image Used

**CLARITY CHARACTERISTICS**



**KEY TO SYMBOLS**

Red symbols indicate internal characteristics.  
Green symbols indicate external characteristics.

**COLOR**

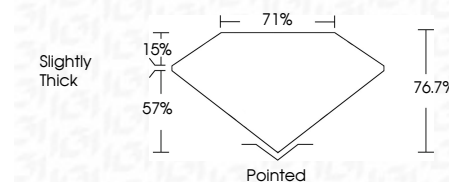
D - F	G - J	K - M	N - R	S - Z	FANCY
Colorless	Near Colorless	Slightly Tinted	Very Light Color	Light Color	

**CLARITY**

FL	IF	VVS <sup>1-2</sup>	VS <sup>1-2</sup>	SI <sup>1-2</sup>	I <sup>1-3</sup>
Flawless	Internally Flawless	Very Very Slightly Included	Very Slightly Included	Slightly Included	Included



March 4, 2026  
IGI Report Number **770657103**  
Description **NATURAL DIAMOND**  
Shape and Cutting Style **PRINCESS CUT**  
Measurements **6.49 X 6.48 X 4.97 MM**  
**GRADING RESULTS**  
Carat Weight **2.00 CARATS**  
Color Grade **K**  
Clarity Grade **VS 1**  
Cut Grade **VERY GOOD**



**ADDITIONAL GRADING INFORMATION**

Polish **EXCELLENT**  
Symmetry **EXCELLENT**  
Fluorescence **VERY SLIGHT**  
Inscription(s) **770657103**



**IGI**



March 4, 2026  
IGI Report No 770657103  
**PRINCESS CUT**  
6.49 X 6.48 X 4.97 MM  
2.00 CARATS  
K  
VS 1  
VERY GOOD  
76.7%  
71%  
Slightly Thick  
Pointed  
EXCELLENT  
EXCELLENT  
VERY SLIGHT  
EXCELLENT  
770657103