



**ELECTRONIC COPY**

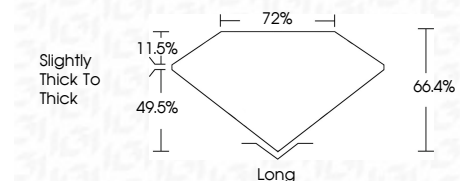
780668863  
Report verification at [igi.org](http://igi.org)



March 26, 2026  
IGI Report Number **780668863**  
Description **NATURAL DIAMOND**  
Shape and Cutting Style **EMERALD CUT**  
Measurements **10.64 X 7.48 X 4.97 MM**

**GRADING RESULTS**

Carat Weight **4.03 CARATS**  
Color Grade **J**  
Clarity Grade **VS 1**  
Cut Grade **VERY GOOD**



**ADDITIONAL GRADING INFORMATION**

Polish **EXCELLENT**  
Symmetry **EXCELLENT**  
Fluorescence **NONE**  
Inscription(s) **(IGI) 780668863**



**IGI**

March 26, 2026  
IGI Report No 780668863  
**EMERALD CUT**  
10.64 X 7.48 X 4.97 MM  
4.03 CARATS  
J  
VERY GOOD  
66.4%  
72%  
Slightly thick to thick  
Long  
EXCELLENT  
EXCELLENT  
NONE  
(IGI) 780668863

**DIAMOND REPORT**

March 26, 2026  
IGI Report Number **780668863**  
Description **NATURAL DIAMOND**  
Shape and Cutting Style **EMERALD CUT**  
Measurements **10.64 X 7.48 X 4.97 MM**

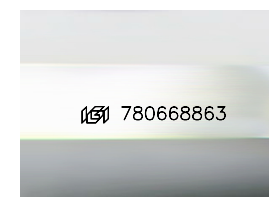
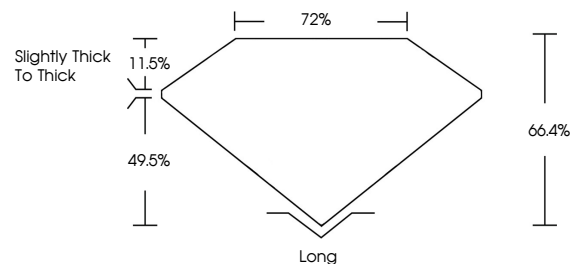
**GRADING RESULTS**

Carat Weight **4.03 CARATS**  
Color Grade **J**  
Clarity Grade **VS 1**  
Cut Grade **VERY GOOD**

**ADDITIONAL GRADING INFORMATION**

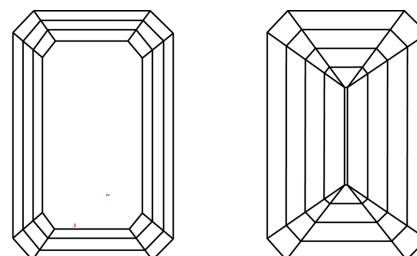
Polish **EXCELLENT**  
Symmetry **EXCELLENT**  
Fluorescence **NONE**  
Inscription(s) **(IGI) 780668863**

**PROPORTIONS**



Sample Image Used

**CLARITY CHARACTERISTICS**



**KEY TO SYMBOLS**

Red symbols indicate internal characteristics.  
Green symbols indicate external characteristics.

**COLOR**

D - F	G - J	K - M	N - R	S - Z	FANCY
Colorless	Near Colorless	Slightly Tinted	Very Light Color	Light Color	

**CLARITY**

FL	IF	VVS 1-2	VS 1-2	SI 1-2	I 1-3
Flawless	Internally Flawless	Very Very Slightly Included	Very Slightly Included	Slightly Included	Included

