



ELECTRONIC COPY

780668865
Report verification at igi.org

DIAMOND REPORT

March 28, 2026
IGI Report Number **780668865**
Description **NATURAL DIAMOND**
Shape and Cutting Style **ROUND BRILLIANT**
Measurements **8.29 - 8.33 X 5.23 MM**

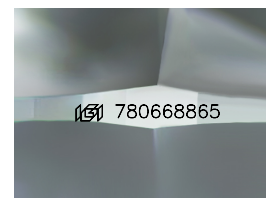
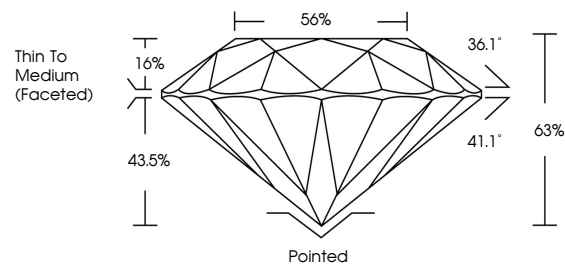
GRADING RESULTS

Carat Weight **2.22 CARATS**
Color Grade **I**
Clarity Grade **INTERNALLY FLAWLESS**
Cut Grade **EXCELLENT**

ADDITIONAL GRADING INFORMATION

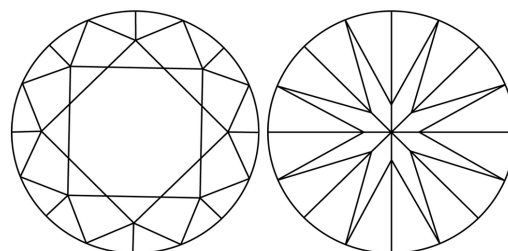
Polish **EXCELLENT**
Symmetry **EXCELLENT**
Fluorescence **NONE**
Inscription(s) **780668865**

PROPORTIONS



Sample Image Used

CLARITY CHARACTERISTICS



KEY TO SYMBOLS

Red symbols indicate internal characteristics.
Green symbols indicate external characteristics.

COLOR

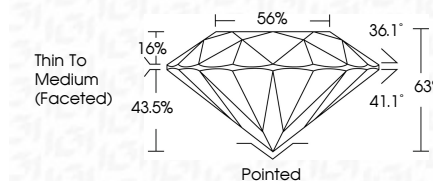
D - F	G - J	K - M	N - R	S - Z	FANCY
Colorless	Near Colorless	Slightly Tinted	Very Light Color	Light Color	

CLARITY

FL	IF	VVS ¹⁻²	VS ¹⁻²	SI ¹⁻²	I ¹⁻³
Flawless	Internally Flawless	Very Very Slightly Included	Very Slightly Included	Slightly Included	Included



March 28, 2026
IGI Report Number **780668865**
Description **NATURAL DIAMOND**
Shape and Cutting Style **ROUND BRILLIANT**
Measurements **8.29 - 8.33 X 5.23 MM**
GRADING RESULTS
Carat Weight **2.22 CARATS**
Color Grade **I**
Clarity Grade **INTERNALLY FLAWLESS**
Cut Grade **EXCELLENT**



ADDITIONAL GRADING INFORMATION

Polish **EXCELLENT**
Symmetry **EXCELLENT**
Fluorescence **NONE**
Inscription(s) **780668865**



IGI



March 28, 2026
IGI Report No 780668865
ROUND BRILLIANT
8.29 - 8.33 X 5.23 MM
2.22 CARATS
I
EXCELLENT
EXCELLENT
NONE
63%
56%
36.1°
41.1°
1.6%
43.5%
Pointed
EXCELLENT
EXCELLENT
NONE
780668865